

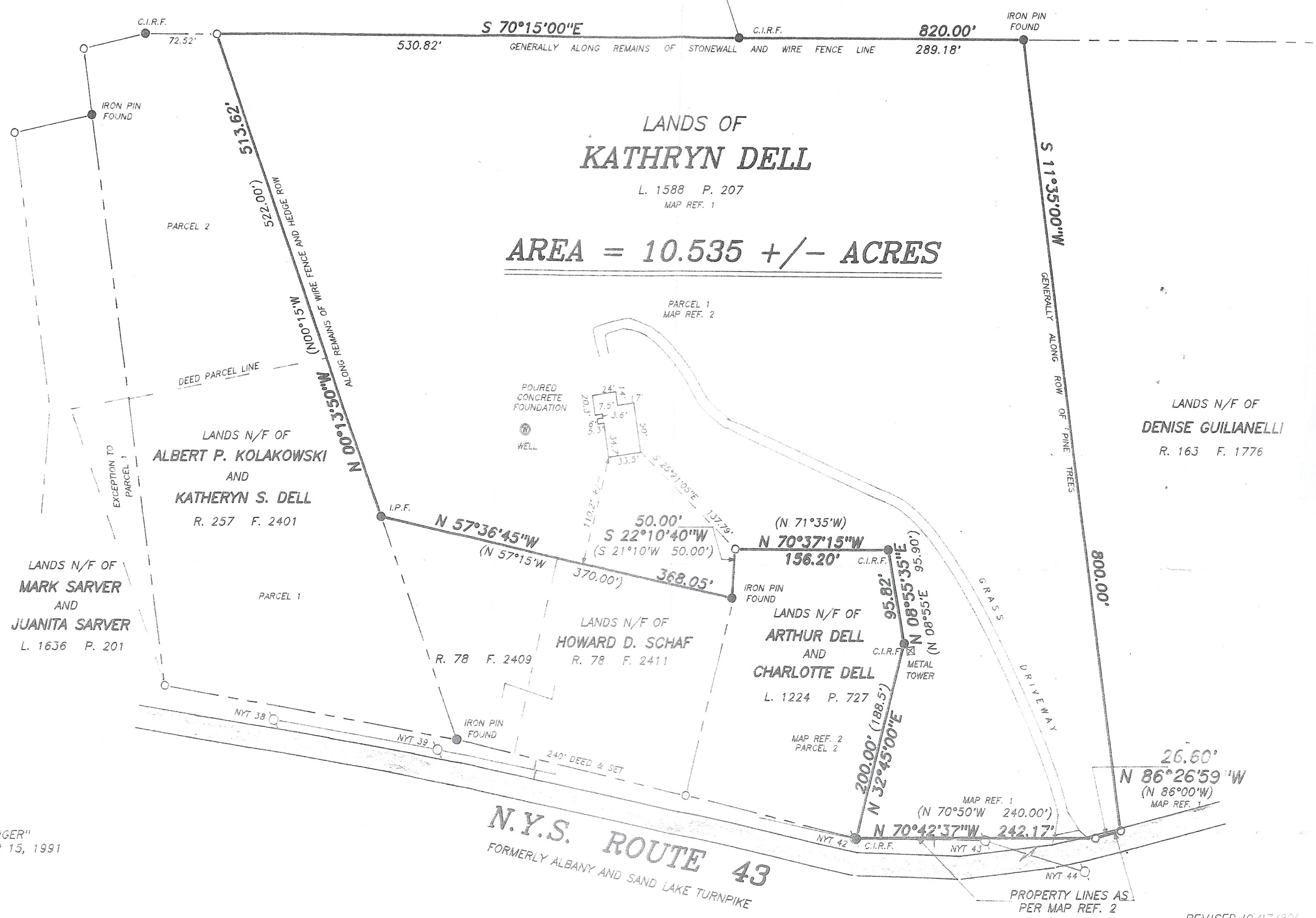
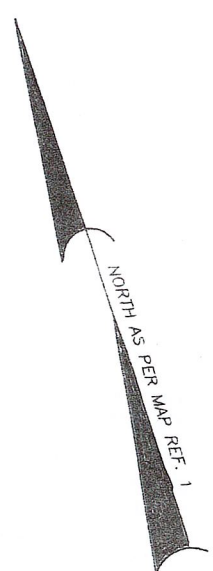
ARTHUR HECK

R. 65 F. 98

MAP REF. 3 & 4

PETER D. TEAL

R. 218 F. 1605



**MAP REFERENCES:**

- 1) "PROPERTY OF BUELA DELL"  
DATED APRIL 28, 1954  
PREPARED BY E. GARDELL, L.S.  
FILED IN THE RENSSELAER COUNTY CLERKS  
OFFICE IN DRAWER 55 AS MAP 15  
(MAP ERROR OF CLOSURE 5' +/-)
- 2) "MAP OF SURVEY: PROPERTY OF DELL"  
DATED JULY 8, 1988  
PREPARED BY KEVIN M. BRADY, L.S.
- 3) "4 SITES SUBDIVISION MADE FOR CHARLES NITTINGER"  
DATED NOVEMBER 7, 1991; REVISED DECEMBER 15, 1991  
PREPARED BY ZAREH K. ALTOUNIAN, P.E & L.S.  
FILED IN THE RENSSELAER COUNTY CLERKS  
OFFICE IN DRAWER 1992 AS MAP 32
- 4) LANDS OF CHARLES W. NITTINGER"  
DATED SEPTEMBER 29, 1986; REVISED MARCH 13, 1987  
PREPARED BY WILLIAM A. WILEY L.S.

**NOTES:**

1) Some dimensions shown hereon vary from DEED and MAP

REVISED 10/17/201

PL